

# Accommodation at the Enac, Toulouse



Years  
2011  
2012

ECOLE NATIONALE DE L'AVIATION CIVILE



# ENAC

## CONTENTS

### École Nationale de l'Aviation Civile



#### ■ 1- SITUATION AND ACCOMMODATION CAPACITY

#### ■ 2- DESCRIPTION OF THE HOUSING OFFER

- 2.1 - Galy, Bastié and Garros Residence Halls
- 2.2 - Ader and Blériot Residence Halls
- 2.3 - Studio and small studio (studette) equipment
- 2.4 - Hotel flat facilities and services
- 2.5 - Studio and flat layouts

#### ■ 3- HOUSING COSTS AND ELIGIBILITY FOR ACCOMMODATION

#### ■ 4- OTHER SERVICES AND AMENITIES

#### ■ 5- CONTACT AND ACCESS



ÉCOLE NATIONALE DE L'AVIATION CIVILE

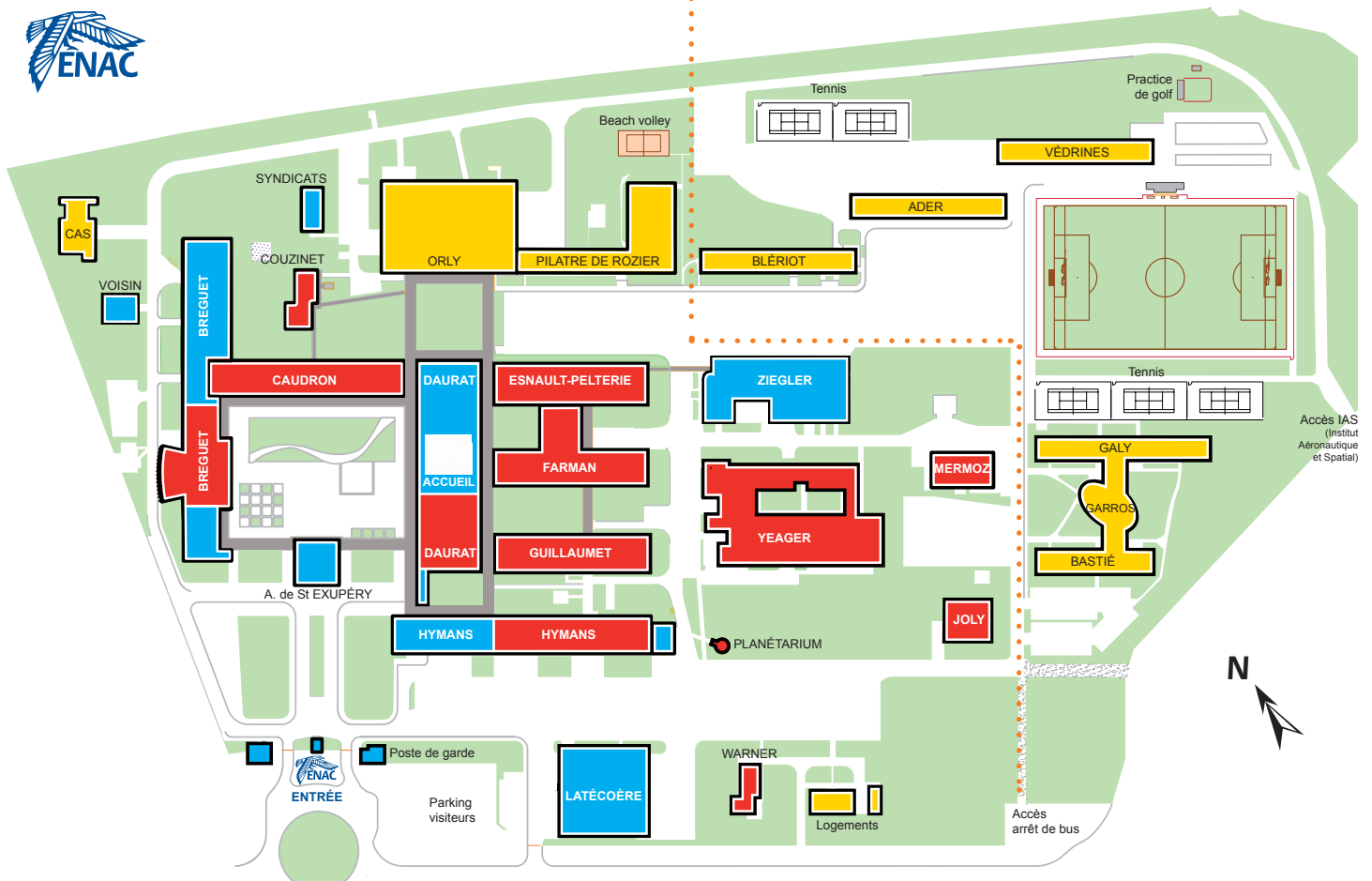
# 1 - SITUATION AND HOUSING CAPACITY

PLAN de L'ENAC



Teaching area

Residential area



Inside the **ENAC campus**, is a residential park of **744** apartments for students :

- **296** studios de 16 m<sup>2</sup> /19yd<sup>2</sup>
- **420** small studios de 12 m<sup>2</sup>/14yd<sup>2</sup>
- **14** studios for disabled persons 20 m<sup>2</sup> /24yd<sup>2</sup>min.
- **14** hotel flats 20 m<sup>2</sup>/24yd<sup>2</sup> min.

## 2- DESCRIPTION OF THE ACCOMMODATION OFFER


### 2.1 - Galy, Bastié and Garros Residence HLLS




 **Capacity : 302 studios de 16 m<sup>2</sup>/19yd<sup>2</sup>**

### 2.2 - Ader et Blériot Résidence Halls



 **Ader capacity : 211 small studios 12 m<sup>2</sup> /14yd<sup>2</sup>**  
**4 studios for students with disabilities 20 m<sup>2</sup>/24yd<sup>2</sup>**

 **Blériot capacity : 209 small studios 12 m<sup>2</sup> /14yd<sup>2</sup>**  
**4 studios for students with disabilities**  
**14 hotel flats 20 m<sup>2</sup> /24yd<sup>2</sup>**

## 2.3 - Equipment of **STUDIOS** and **SMALL STUDIOS** (studettes)

- *Each studio has the following equipment :*

- Single bed (with blanket, bolster, etc ...)
- Equipped study desk, fit for a computer & screen
- Small kitchen with cupboards, shelf (for a microwave), sink, 2 electric plate hobs, fridge (110 L)
- Bath facilities with shower, washbasin, toilets
- Wardrobe and shelves
- Storage space for big suitcases
- Book-cases
- Study chair
- Folding table for meals
- Wall mirror
- Triple-function socket (for FM, Satellite and Digital Terrestrial Television /DTTV), conventional phone and ADSL network socket
- Free access to the internet via wiring (RJ45 connection)
- Voltage : 230 V 50 Hz
- Electric door lock (operated with a security badge which opens all the residence halls)
- Interphone
- Desk lamp
- Tableware set



## 2.4 - Facilities & services in the **HOTEL FLATS**

### ▪ *Equipment :*

- Double bed (with blanket, bolster, etc...)
- Equipped study desk, fit for a computer & screen
- Small kitchen with cupboards, sink, 2 electric hot plate hobs, microwave, kettle (and/or coffee pot), fridge (110 L)
- Bath facilities with shower, washbasin, toilets
- Wardrobe and shelves
- Storage space for big suitcases
- Book-cases
- Study chair
- Folding table for meals
- Wall mirror
- Voltage: 230 V 50 Hz
- Electric door lock (operated with a security badge which opens all residence halls)
- Interphone
- Desk lamp
- Complete tableware set

## **INCLUDED SERVICES**

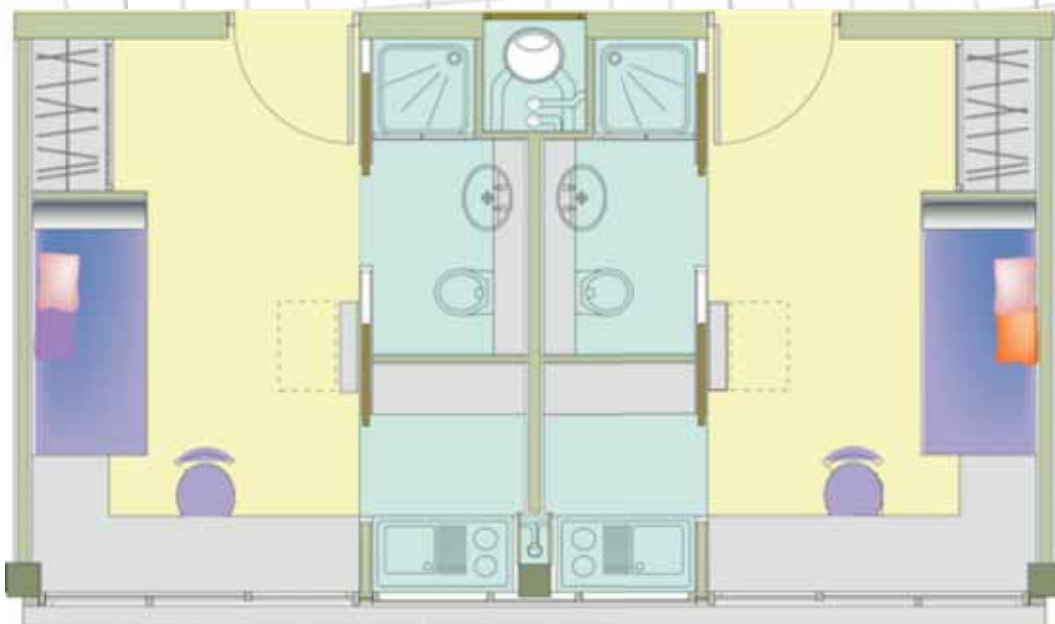
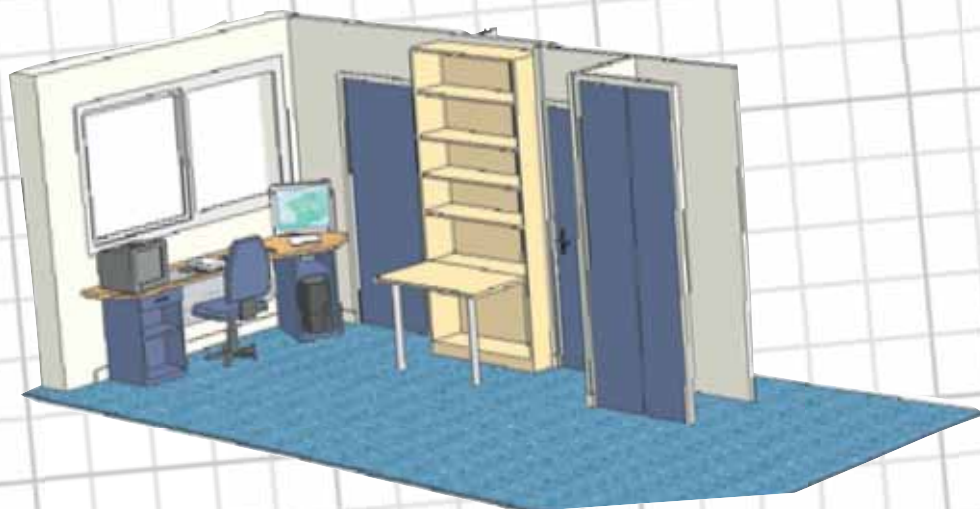
- Personal reception of the guest, introduction to his flat
- Rooms are prepared to a high standard, beds are made every day (bedsheets are changed every 3 days)
- Laundry and towels (changed every 3 days) & fully furnished toiletry bags (care products are renewed every day)
- Tea bags and coffee
- Free Internet access (connection via RJ45)
- TV set with free access to the bouquet of international channels
- Web browser

## 2.5 - Flat and studio layouts

### Studettes de 12 m<sup>2</sup> (résidences ADER et BLERIOT)



## Studios de 16 m<sup>2</sup> (résidences GALY, BASTIÉ et GARROS)



## Studios «VIP» de 20 m<sup>2</sup> (résidences ADER et BLERIOT)



# 3 - HOUSING COSTS AND ELIGIBILITY FOR ACCOMMODATION

*Rates from September 2011 :*

## Hotel flats

€ 55 rate per night

Booking is without notice. The accommodation is subject to availability.

## Studios & studettes for students :

	Studio	Small studio
Month	300 €	243 €
Night	10 €	8,10 €

The apartments are allocated to applicants in ab-initio training, a priority being given to civilian students and freshmen. They can also be allocated to other students according to the accommodation availability.

## Studios & studettes for Civil Service students :

	Studio	Small studio
Month	390 €	309€
Night	13 €	10,30 €

Payment of accommodation fees is preferably by direct debit, or by monthly instalments (cash, cheques or credit card are acceptable) at the ENAC Financial Accounting Office (H building).

*A damage deposit equal to a 1 month rent is required at registration: It is refundable when the schooling ends.*

## **DGAC trainees or ENAC's partner institution trainees**

	<b>Studio</b>	<b>Small studio (studette)</b>
<b>Night</b>	€ 22	€ 17

## **Other:**

	<b>Studio</b>	<b>Small studio (studette)</b>
<b>Night</b>	€ 32,50	€ 24,50

Payment is to be made by cash, cheque or credit cards at the ENAC Financial Accounting Office (H building), two days before leaving, upon presentation of the exit note (fiche de sortie) edited by the Accommodation Service Department.

## **ACCOUNTING OFFICE**

### **OPENING HOURS**

- Monday through Thursday: 08:30am to 12:30 and 1:30pm to 5:00pm
- Friday: 08:30am to 12:30 and 1h30pm to 4:00pm
- Phone number 33 (0) 5 62 17 44 56 • Fax : 33 (0) 5 62 17 44 75



## OTHER SERVICES AND AMENITIES :

The residents are offered the following services on the campus :

- Onsite shop (in the Roland Garros Residence Hall) providing newspapers, commodities or electric household rental, etc .... (to be opened in January 2011)
- Self-service laundry in the Ader Residence Hall (10 washers and 4 dryers).
- Sheet set : € 13
- Cleaning service :€ 10
- Free internet terminal in the Garros Residence Hall
- Free internet access in the studios and flats
- Vending machines : cold & hot drinks, precooked dishes to warm up, sandwiches and sweets
- Sports facilities : 5 tennis courts, 1 training room, 1 synthetic sports field, 1 gymnasium (on booking)
- TV rooms
- Free access to the bouquet of international channels in the Ader and the Blériot Residence Halls
- Assembly room (on booking)
- Self-service restaurant and cafeteria

### RESTAURANT OPENING HOURS :

- WEEK : 11:30AM TO 2:00PM AND 7:00PM TO 8:30PM
- WEEKEND : 12:00 TO 1:00PM AND 7:00PM TO 8:30PM

### CAFETERIA OPENING HOURS :

- WEEK : 7:15AM TO 3:30PM
- WEEK-END : CLOSED

### PRICES FOR STUDENTS :

- REGULAR MEAL PRICE : € 3.25
- BREAKFAST : € 2 (CAFETERIA)

### PRICES WITHOUT ANY SCHOOL SUBSIDY :

- REGULAR MEAL PRICE : € 6.36
- BREAKFAST : € 2 (CAFETERIA)

# 5 - Contact AND ACCESS

## ADDRESS

**Service Hébergement, Résidence Garros**

7 avenue Edouard Belin

BP 54005

31055 Toulouse Cedex 4

Tel : **33 (0)5 62 17 45 30** Fax : **33 (0)5 61 25 31 71**

Courriel : [hebergement@enac.fr](mailto:hebergement@enac.fr)

## CONTACT

**Madame Christine LABORIE**

Département Admissions et Vie des Campus (AVIC)

Tel : 33 (0)5 62 17 40 75

## ACCÈS



**By public transports :**

Underground: line B (station Faculté de pharmacie) and Bus Lines 51, 68,108 (ENAC bus stop)

<http://www.tisseo.fr/>



**By bike (citywide bike rentals) :**

Vélo-Toulouse Service (ENAC station n° 223)

<http://www.velo.toulouse.fr>

•Opening hours :

Reception, booking and information:

**24hrs a day**

